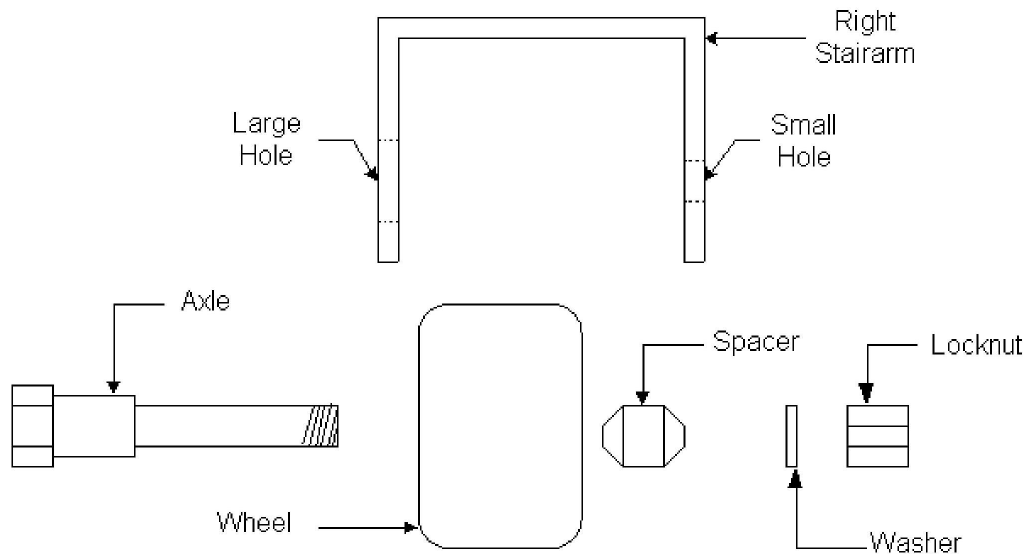


Procedure 7.20 - Replacing the Stair Arm Wheel

Removing the Old Wheel

1. Turn off the EFX 544 with the circuit breaker, then unplug the power cord from the wall outlet.
2. Remove the rear cover as described in Procedure 7.1.
3. Lift the stair arms from the ramp assembly and rotate them towards the back of the EFX 544.
4. Use wrenches to remove the wheels from the stair arm assembly.
5. Replace with the new wheel assembly (Precor part number: 50532-108). Install the tapered aluminum spacer (shown in Diagram 7.8) to prevent noise during operation.

Diagram 7.8 - Stairarm Wheel



6. The wheel assembly consists of a wheel, axle, spacer, washer and locknut.
7. Securely tighten the locknut.
8. Rotate the stair arms towards the front of the EFX 544. Position the stair arms on the rail assembly.
9. Re-install the rear cover as described in Procedure 7.1, then check the operation of the EFX 544 as described in Section Four.